



**CDTFA**  
CALIFORNIA DEPARTMENT OF  
TAX AND FEE ADMINISTRATION

# Tax Insights Quarterly

## 2021 Q1



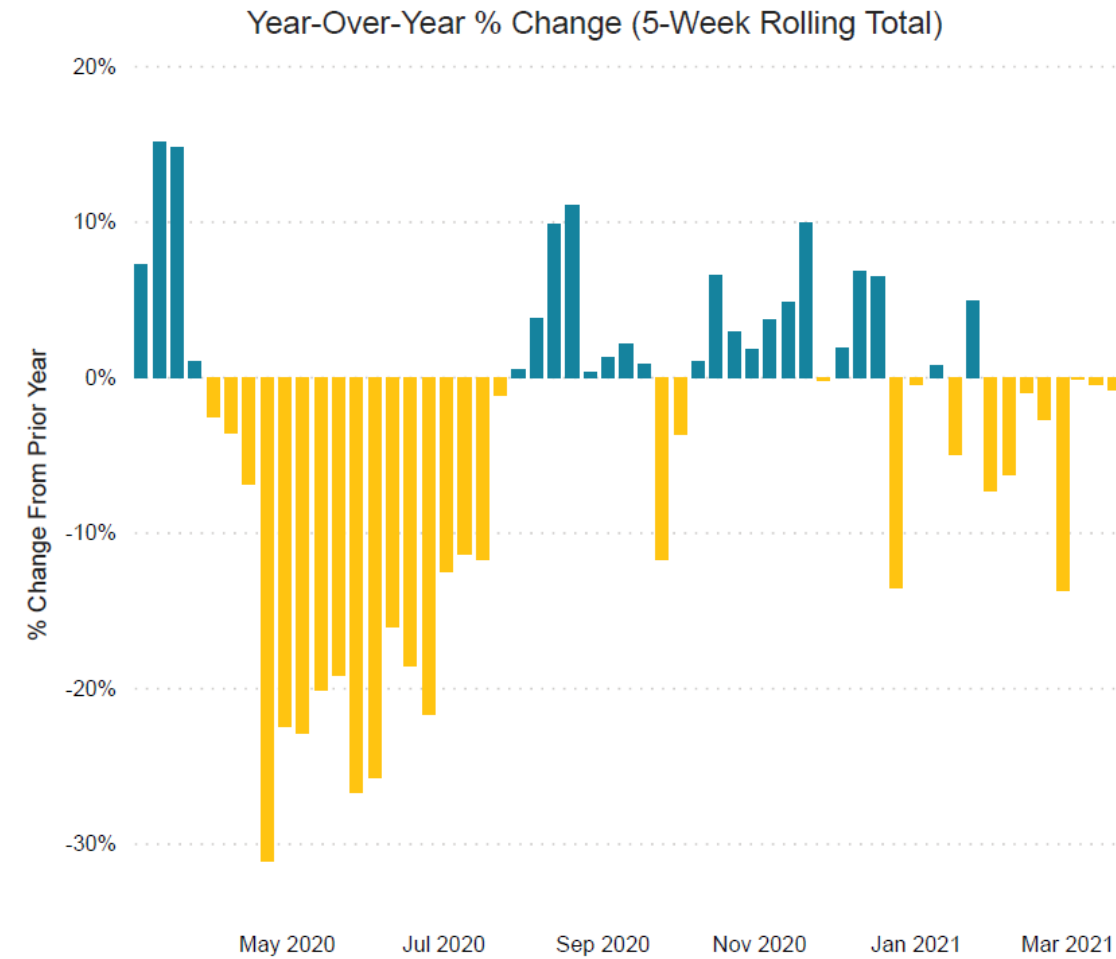
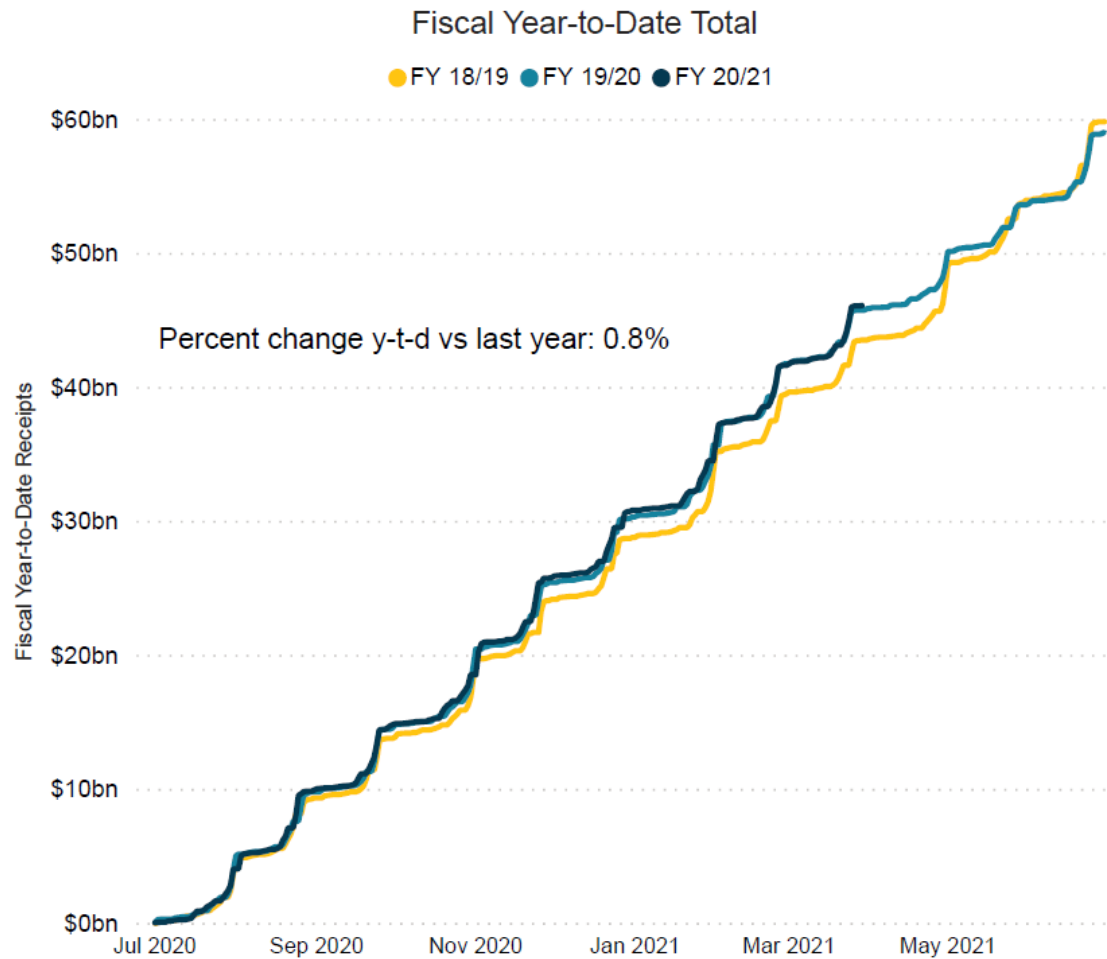
# Introduction

---

- Welcome to the California Department of Tax and Fee Administration's (CDTFA) *Tax Insights Quarterly*, an update on California's tax data from the Department's Research and Statistics team.
- This quarterly update evolved from an internal analysis to the current format we are pleased to share with you. We hope you find it useful.
- CDTFA collects over \$70 billion per year to fund essential services for the world's fifth largest economy. Our 37 tax and fee programs range from sales and use tax, to fuel, and cannabis tax.
- We will update you quarterly with our observations and we appreciate your feedback.  
Enjoy *Tax Insights Quarterly*!

# Sales & Use Tax: Overall Cash Receipts

After a significant decline in April and May 2020, cash receipts have largely recovered.

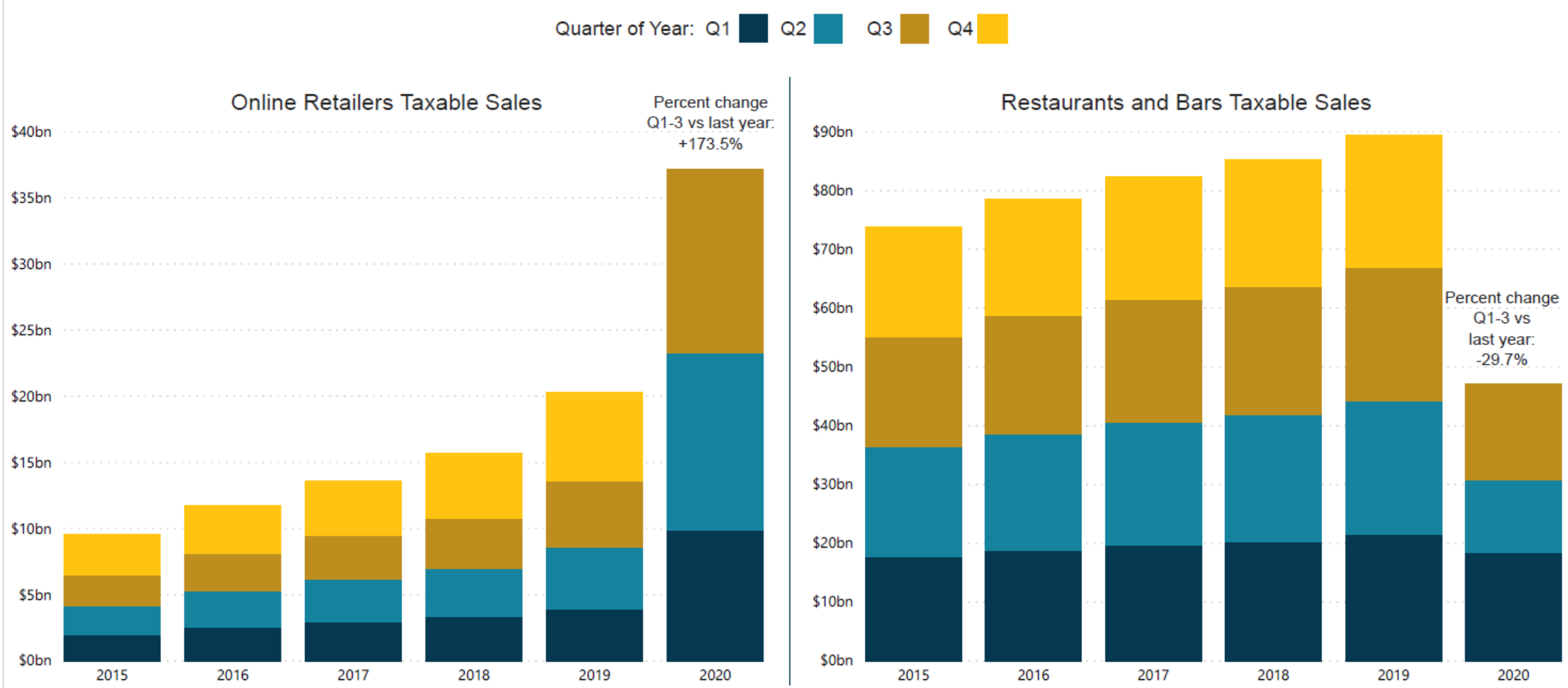


Data as of: 3/29/21

1. Represents cash receipts (not tax return data). Excludes DMV payments, FTB payments, and other adjustments.
2. Most taxpayers received an additional 3-months to file and pay in 1Q20, 2Q20, 4Q20 and 1Q21.

# Sales & Use Tax: A Tale of Two Industries

While overall cash receipts have largely recovered since the summer, there are clear outperforming and underperforming industries.



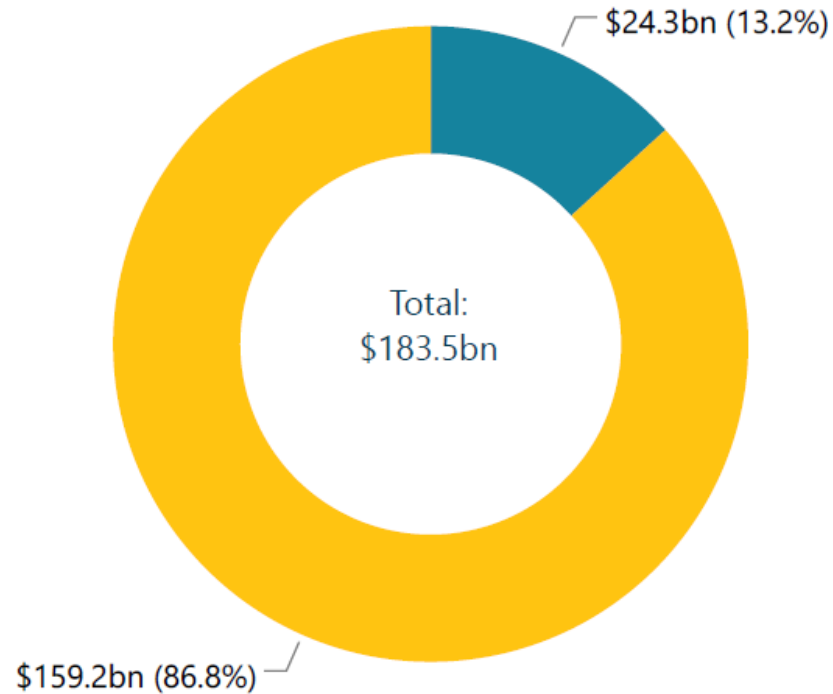
1. In 2019 AB-147 expanded California's ability to collect sales taxes from online retailers.

# Sales & Use Tax: Taxable Sales Concentration

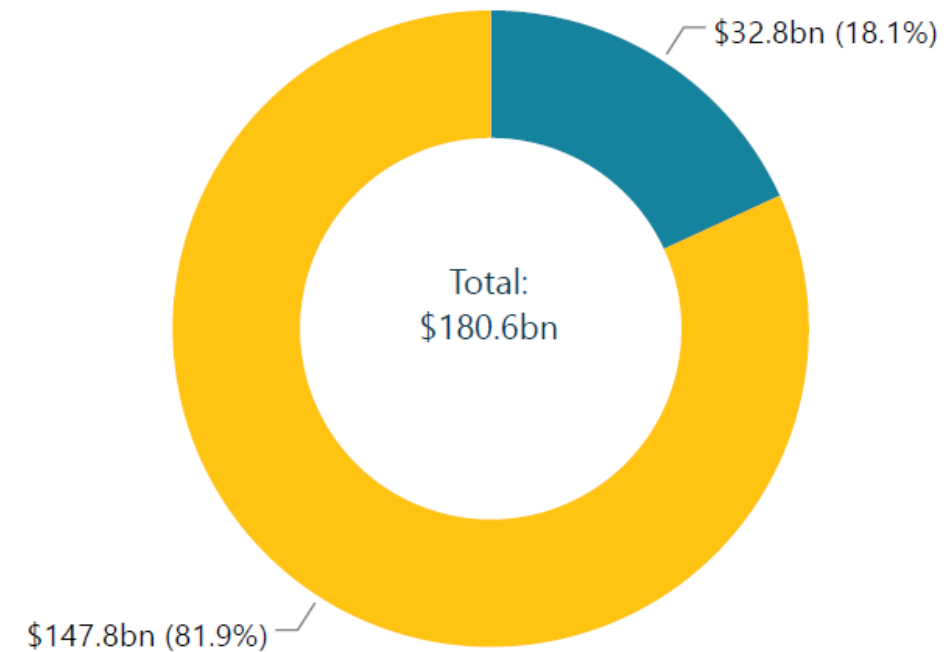
The largest taxpayers have recently increased their share of taxable sales relative to all other taxpayers.

Taxpayer size by quarterly taxable sales: >\$500M ■ <\$500M ■

3Q19 Percent Share of Taxable Sales



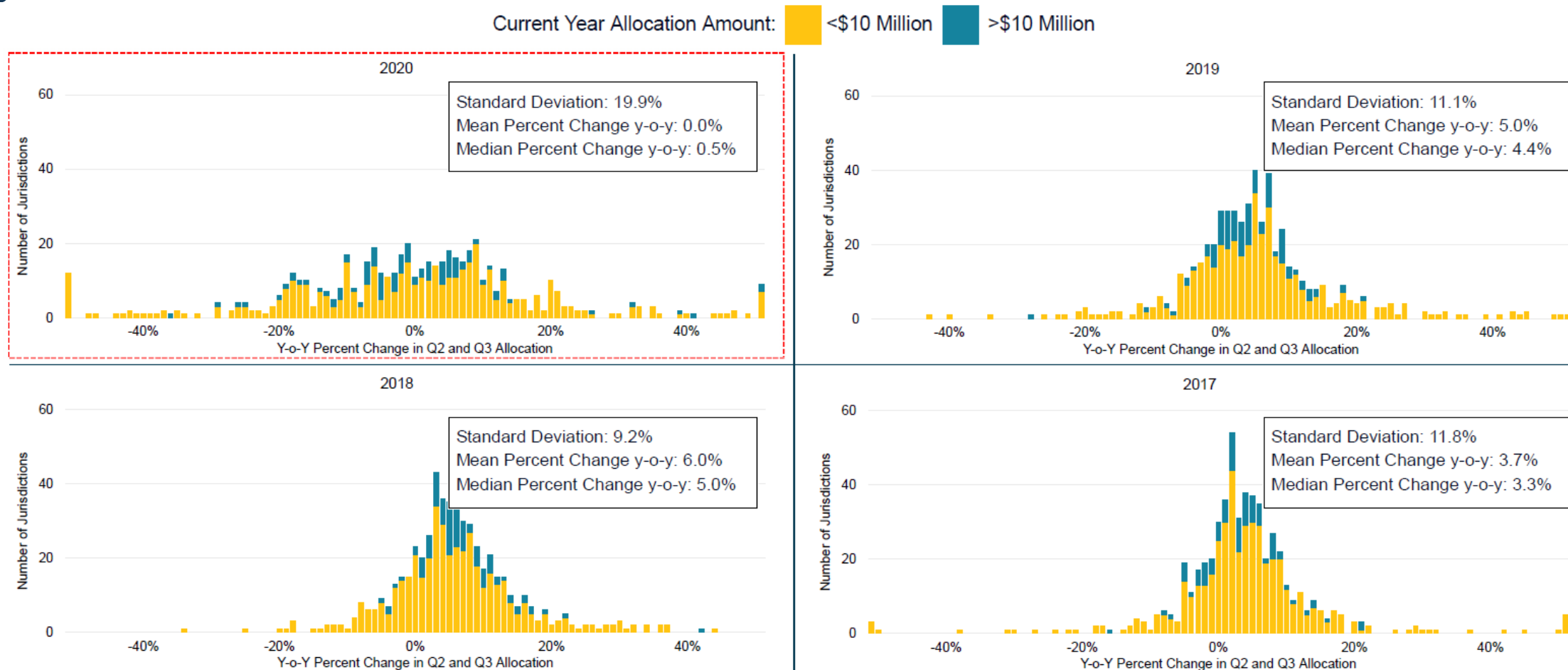
3Q20 Percent Share of Taxable Sales



1. 2020-Q3 data are preliminary.

# Local Government Allocations

CDTFA disburses over \$18 billion to 1,000+ local jurisdictions each year. Relative to 2017-2019, 2020 had more divergent outcomes.



1. Data represents the percent change in allocation amount for jurisdictions from Q2 and Q3 of the prior year.
2. Excludes jurisdictions with a change in allocation amounts more than 3 standard deviations from the mean. Jurisdictions with a percent change less than -50% or more than 50% are reflected in aggregate at opposite ends of the x-axis.



# Additional Resources

---

CDTFA Open Data Portal

<https://www.cdtfa.ca.gov/dataportal/>

CDTFA Data Visualizations

<https://www.cdtfa.ca.gov/dataportal/visual.htm>

CDTFA Research and Statistics Email

[Research@cdtfa.ca.gov](mailto:Research@cdtfa.ca.gov)



# Disclaimer

---

The information provided herein is for general informational purposes only. The information is not advice and should not be treated as such. CDTFA does not assume any legal liability or responsibility, either express or implied, for the accuracy, completeness, or usefulness of any information contained herein.